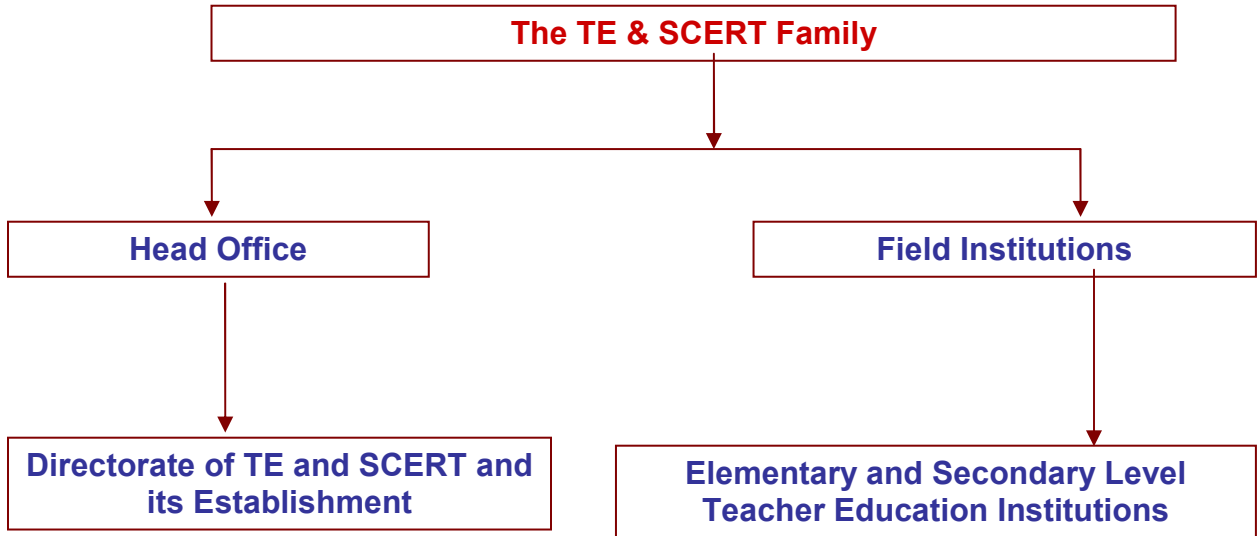
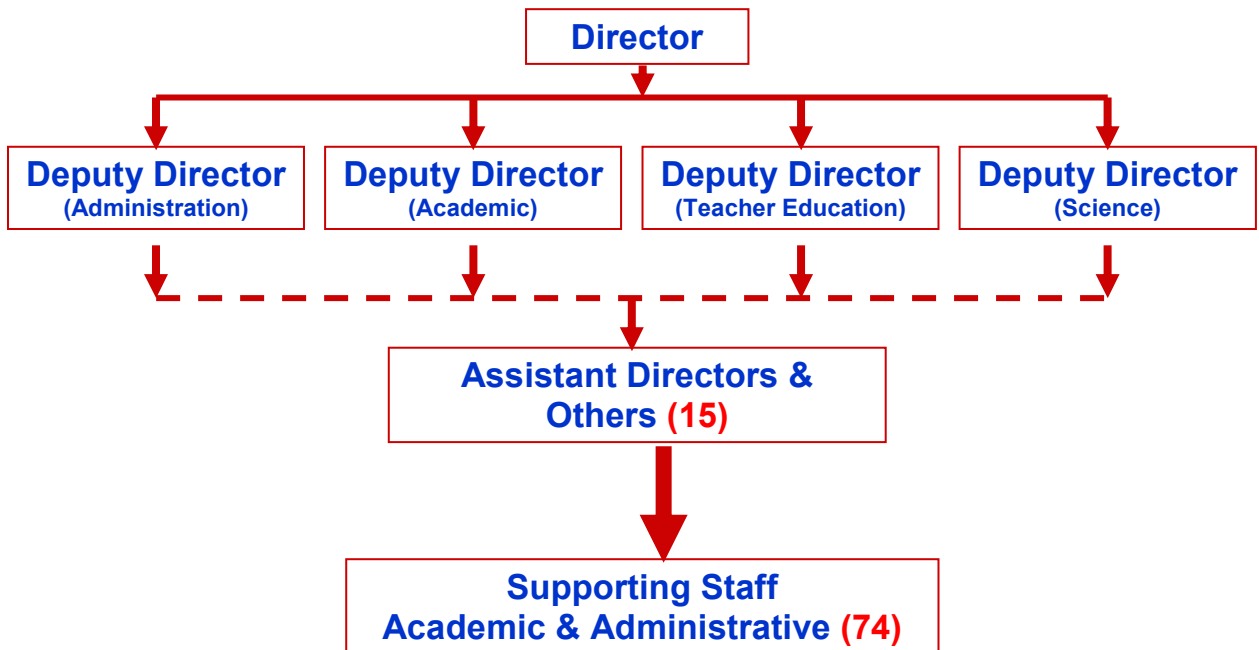


## CHAPTER 17

### STRUCTURE OF TE AND SCERT



### Directorate of TE and SCERT and its Establishment



## APPENDIX – IV

### BUDGET PROVISION OF DIRECTORATE OF TE AND SCERT (2008-2009)

Sl. No.	Name of the Scheme	Amount (Rs. in TRS)		
		Annual Budget, 2008-2009	First Supplementary, 2008-2009	Total
<b>NON-PLAN</b>				
1.	Direction and Administration (SCERT)	14166	5743	19909
2.	SBEVG	1857	778	2635
3.	NTS	600	400	1000
4.	Government S.T. Schools	77524	32081	109605
5.	Government Training College	44273	18305	62578
6.	IAS Coaching Centre at Ravenshaw University	1071	442	1513
<b>Total</b>		<b>139491</b>	<b>57749</b>	<b>197240</b>
<b>STATE PLAN</b>				
7.	Popularization and Improvement of Science Education in Schools	1200	-	1200
8.	Curriculum Development	-	100	100
9.	Grants to SIET	5000	3000	8000
10.	Opening of B.Ed. College at Phulbani	-	7926	7926
<b>Total</b>		<b>6200</b>	<b>11026</b>	<b>17226</b>
<b>CENTRAL PLAN</b>				
11.	Continuance of IASEs	23065	1540	24605
12.	Continuance of CTE (NT)	22503	11700	34203
13.	Continuance of CTE (TASP)	4084	1150	5234
14.	Continuance of DIET (NT)	46641	34870	81511
15.	Continuance of DIET (TASP)	47039	10580	57619
16.	Continuance of IED	120665	1	120666
<b>Total</b>		<b>263997</b>	<b>59841</b>	<b>323838</b>

## A B S T R A C T

<b>Scheme</b>	<b>Amount (in TRS)</b>
Non-Plan	197240
State Plan	17226
Central Plan	323838
<b>Grand Total</b>	<b>538304</b>